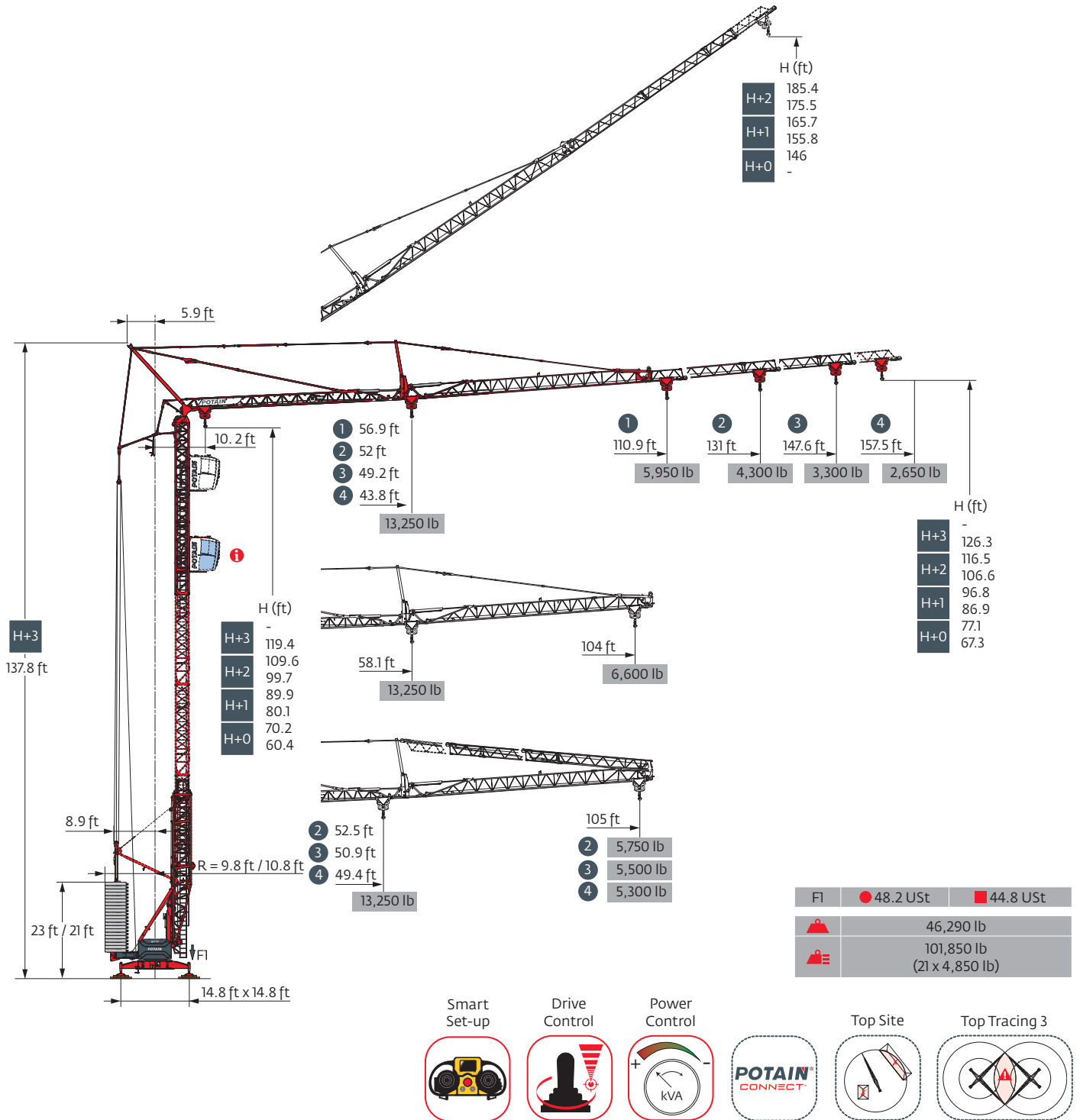
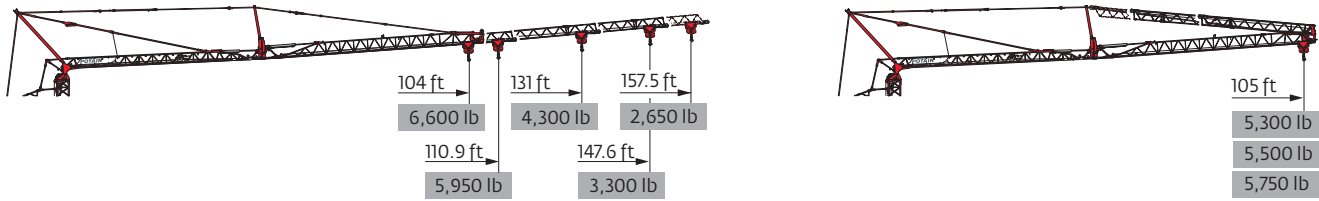


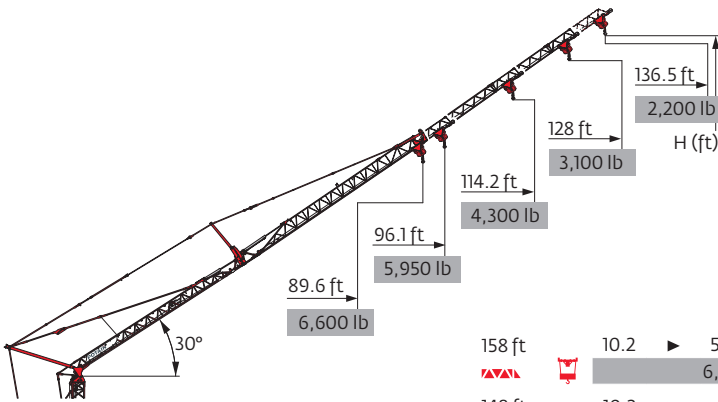
## Igo T 99



Load curves

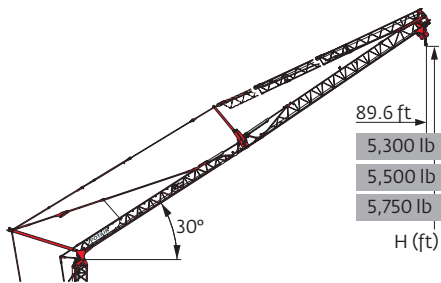


158 ft	10.2	▶	43.8	46	53	59	66	72	79	85	92	98	105	112	118	125	131	138	144	151	157.5	ft
▲▲▲	▲		13,250	12,450	10,550	9,150	8,050	7,150	6,400	5,800	5,300	4,850	4,500	4,150	3,850	3,600	3,400	3,150	3,000	2,800	2,650	lb
148 ft	10.2	▶	49.2	53	59	66	72	79	85	92	98	105	112	118	125	131	138	144	147.6	ft		
▲▲▲	▲		13,250	12,200	10,500	9,200	8,150	7,300	6,600	6,000	5,500	5,100	4,700	4,400	4,100	3,850	3,600	3,400	3,300	lb		
131 ft	10.2	▶	52	53	59	66	72	79	85	92	98	105	112	118	125	131	ft					
▲▲▲	▲		13,250	13,050	11,350	10,000	8,900	8,000	7,300	6,650	6,150	5,650	5,250	4,900	4,600	4,300	lb					
111 ft	10.2	▶	56.9	59	66	72	79	85	92	98	105	110.9	ft									
▲▲▲	▲		13,250	12,650	11,150	9,950	8,950	8,150	7,450	6,850	6,350	5,950	lb									
104 ft	10.2	▶	58.1	59	66	72	79	85	92	98	104	ft										
▲▲▲	▲		13,250	13,000	11,450	10,200	9,200	8,400	7,650	7,050	6,600	lb										
158 ft	10.2	▶	49.4	53	59	66	72	79	85	92	98	105	ft									
▲▲▲	▲		13,250	12,250	10,650	9,350	8,350	7,500	6,800	6,250	5,750	5,300	lb									
148 ft	10.2	▶	50.9	53	59	66	72	79	85	92	98	105	ft									
▲▲▲	▲		13,250	12,750	11,050	9,750	8,700	7,800	7,100	6,500	5,950	5,500	lb									
131 ft	10.2	▶	52.5	53	59	66	72	79	85	92	98	105	ft									
▲▲▲	▲		13,250	13,200	11,450	10,100	9,000	8,100	7,350	6,750	6,200	5,750	lb									



▲▲▲	158 ft	148 ft	131 ft	111 ft	104 ft	
H (ft)	H+2	185.4	180.4	172.2	-	-
	H+1	165.7	160.8	152.6	142.4	138.5
	H+0	146	141.1	132.9	122.7	118.8
	-	-	-	-	-	




158 ft	10.2	▶	58.5	66	72	79	85	92	98	105	112	118	125	131	136.5	ft
▲▲▲	▲		6,600	5,700	5,100	4,550	4,100	3,750	3,400	3,150	2,900	2,700	2,500	2,350	2,200	lb
148 ft	10.2	▶	69.6	72	79	85	92	98	105	112	118	125	128	ft		
▲▲▲	▲		6,600	6,350	5,700	5,150	4,700	4,300	4,000	3,700	3,400	3,200	3,100	lb		
131 ft	10.2	▶	80.2	85	92	98	105	114.2	ft							
▲▲▲	▲		6,600	6,150	5,600	5,150	4,750	4,300	lb							
111 ft	10.2	▶	88.6	92	96.1	ft										
▲▲▲	▲		6,600	6,300	5,950	lb										
104 ft	10.2	▶	89.6	ft												
▲▲▲	▲		6,600	lb												









158 ft	10.2	▶	74.6	79	85	89.6	ft
▲▲▲	▲		6,600	6,200	5,600	5,300	lb
148 ft	10.2	▶	77.1	79	85	89.6	ft
▲▲▲	▲		6,600	6,450	5,850	5,500	lb
131 ft	10.2	▶	79.6	85	89.6	ft	
▲▲▲	▲		6,600	6,100	5,750	lb	

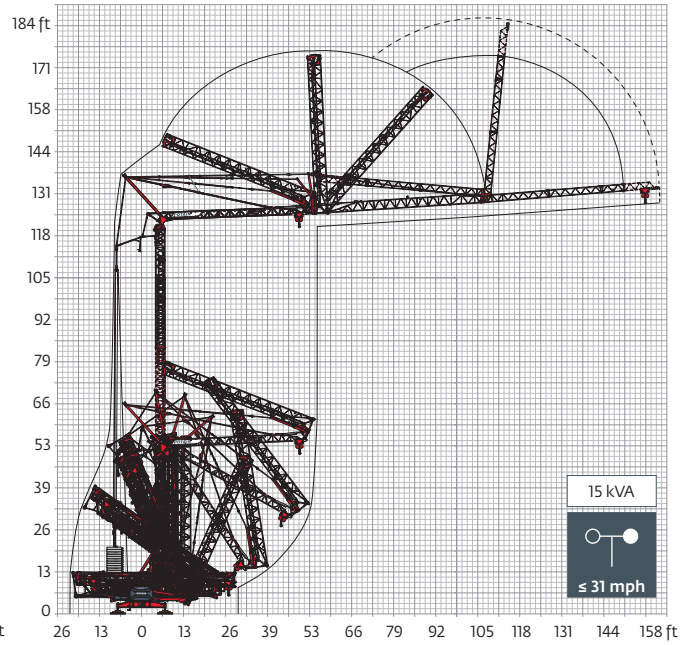
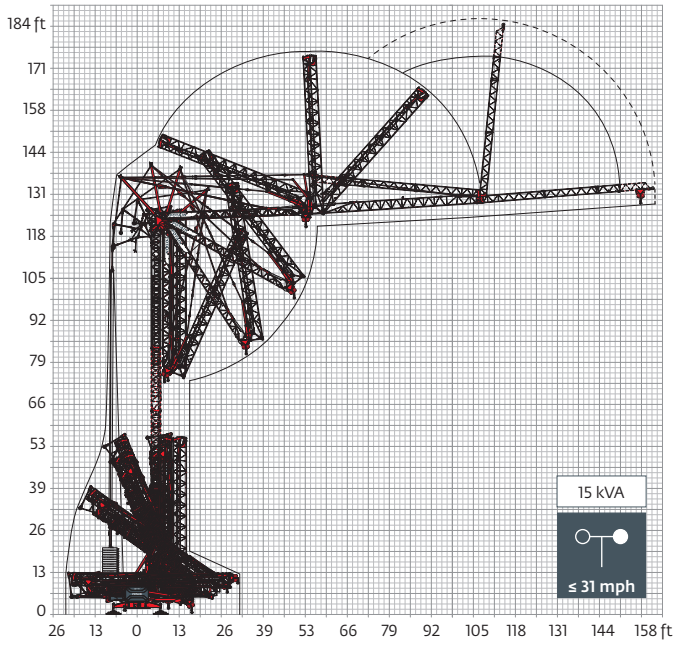
▲▲▲	158 ft	148 ft	131 ft
H (ft)	H+1	138.5	
	H+0	128.6	
		118.8	
	-	-	-

Mechanisms

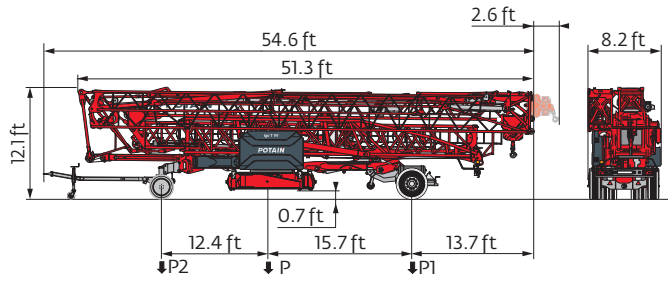
480 V - 60 Hz			UU					hp	kW
	25 HPL™ 15	fpm	7	52	98	151	177	25	19
		lb	13,250	13,250	6,600	3,300	2,650		
	5 DVF 5 Optima	fpm	48	128	180	230		5.5	4
		lb	13,250	13,250	4,400	440			
	HPS 152	rpm	0 → 0.8					2 x 5.5	2 x 4

 IEC 60204-32	 kVA	
480 V (+6% -10%) 60 Hz	 29 → 21 kVA  34 → 24 kVA	

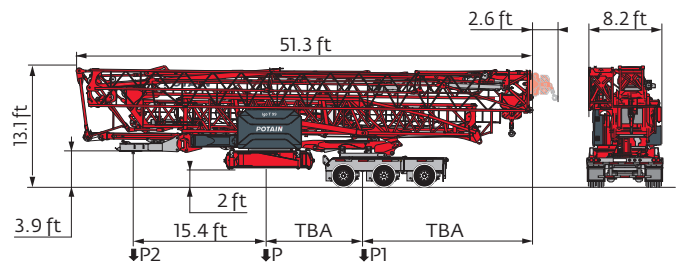
Erection



Transport



	mph	P (lb)	P1 (lb)	P2 (lb)
DJ126M/S125	15.5	50,670	26,450	24,220



	mph	P (lb)	P1 (lb)	P2 (lb)
North America Highway Axle	31	<b>i</b>	<b>i</b>	<b>i</b>

- R Rear slewing radius
- Reactions in service
- Reactions out of service
- ⚖ Weight without load, without ballast, without transport axles, with max. jib and standard height
- ⚖ Total ballast weight
- Standard equipment
- Options
- i Consult us
- ♦ Hoisting
- ◀▶ Trolleying
- ⊙ Slewing
- kVA Required power
- ⏱ Power Control Function: winch speeds adapted to the available power

Hook heights given with plated pulley block

⚠ This commercial document is not legally binding

For any technical information, please refer to the corresponding instructions

