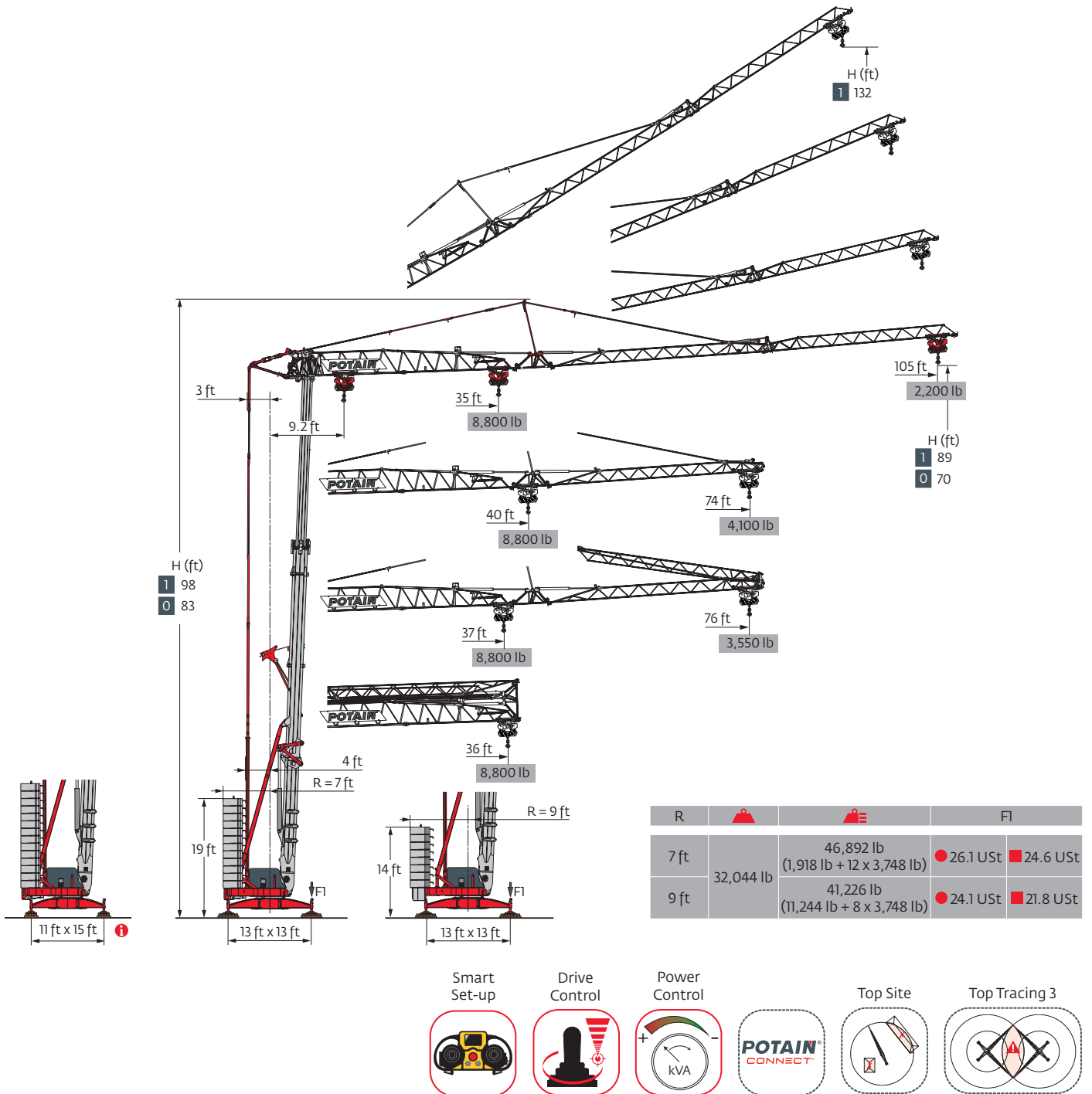
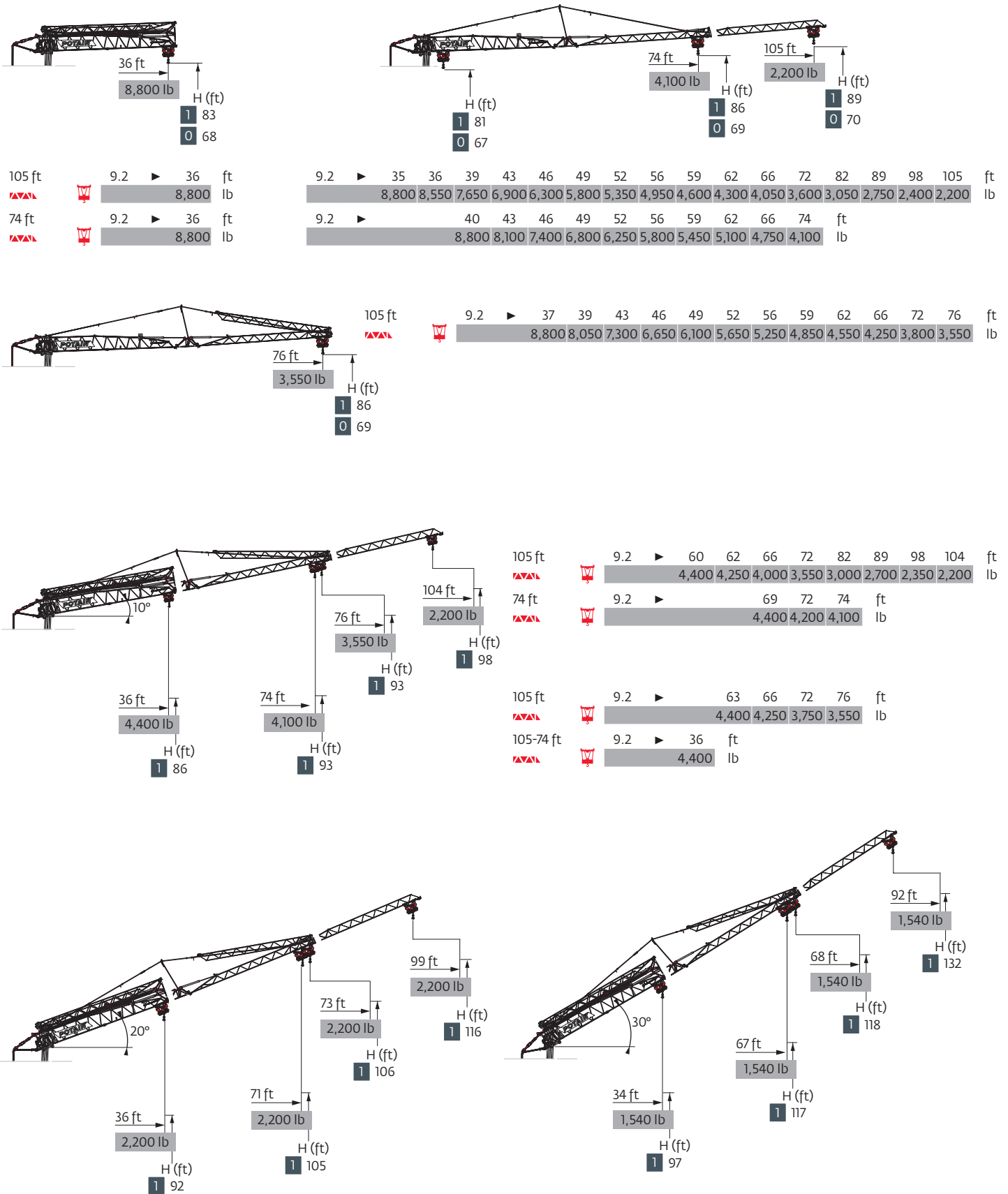


Hup 32-27









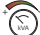
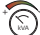
Load curves



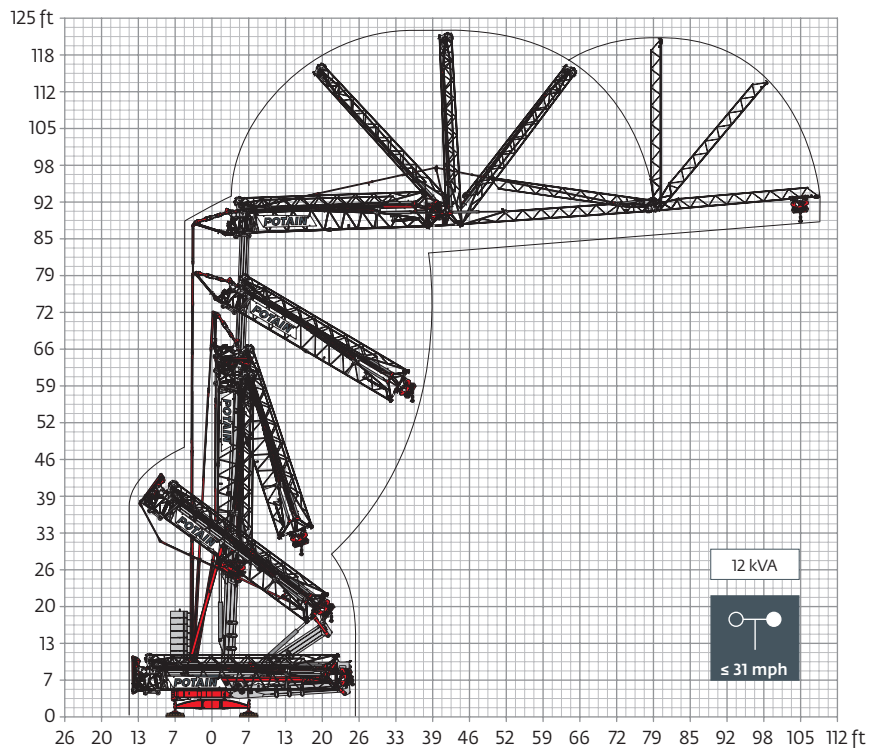
Hup 32-27

Mechanisms

480 V - 60 Hz								hp	kW
	18 HPL™ 10	fpm	6	62	118	190	213	18	13
		lb	8,800	8,800	4,400	2,200	1,100		
	3 DVF 5	fpm	3 → 148 (0 → 2,200 lb) 3 → 135 (2,200 lb → 8,800 lb)					3	2.2
	HPS 141	rpm	0 → 0.9					5	3.7

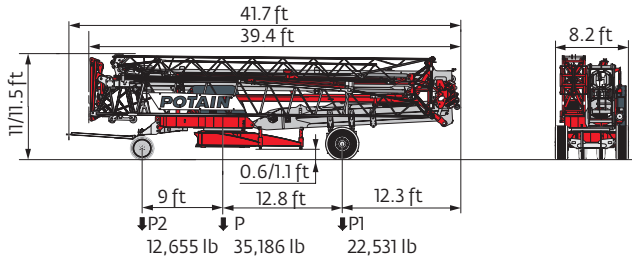
 IEC 60204-32	 kVA	
480 V (+6% -10%) 60 Hz	19 → 13 kVA	

Erection

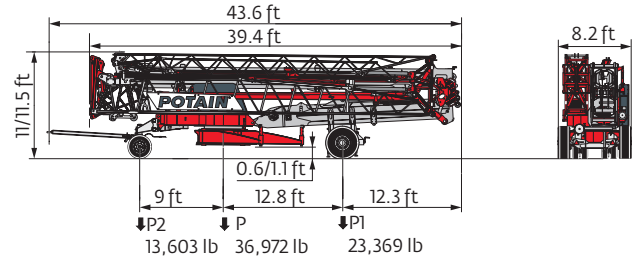


Transport

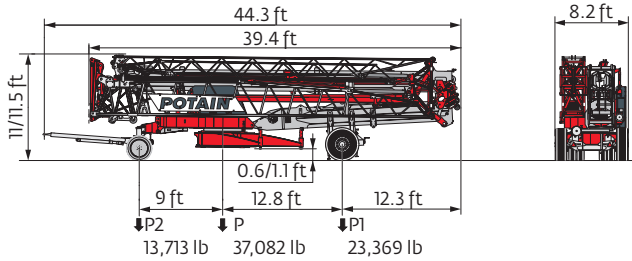
DS62/S120 - 6 mph



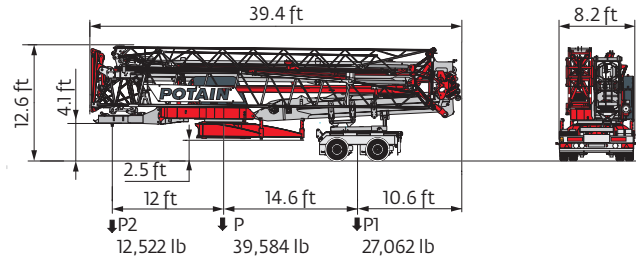
DJ105/S125 - 15.5 mph



DJ126M/S125 - 15.5 mph



North America Highway Axle



Container 40' Open Top High Cube



- R Rear slewing radius
- i Consult us
- Reactions in service
- Reactions out of service
- ⚖ Weight without load, without ballast, without transport axles, with max. jib and standard height
- ⚖ Total ballast weight
- Standard equipment
- ⊞ Options
- ⬆ Hoisting
- ⬆ Trolleying
- ⦿ Slewing
- kVA Required power

Power Control Function: winch speeds adapted to the available power

Hook heights given with plated pulley block
 This commercial document is not legally binding
 For any technical information, please refer to the corresponding instructions

